



Biology Practical

















These genes a certain sequence

There has been a lot of work done on the use of the following methods in practice.

Using the chromatase

Read all the instructions before you start

10. Set up the following table

Tube	Leaf extract	Chromatase	Reaction mixture	Substrate	ADP
1	+	+	+	+	+
2	+	+	+	-	+
3	+	+	-	+	+
4	+	-	+	+	+

11. When the ADP is added to the mixture, the leaf extract will be able to convert the substrate to the product. How are things expected to be in each of the tubes?

New Wave
 From the
 ...











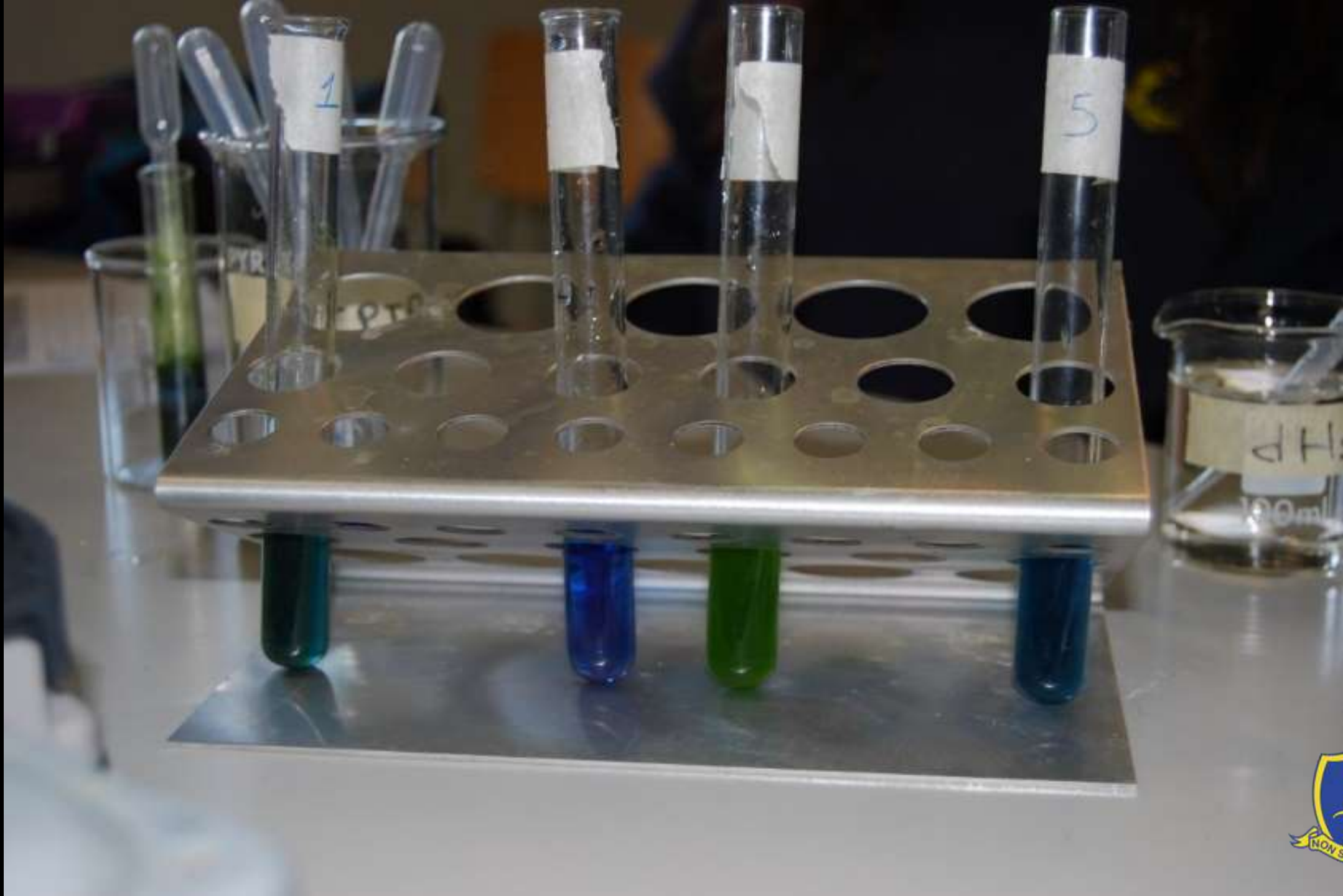


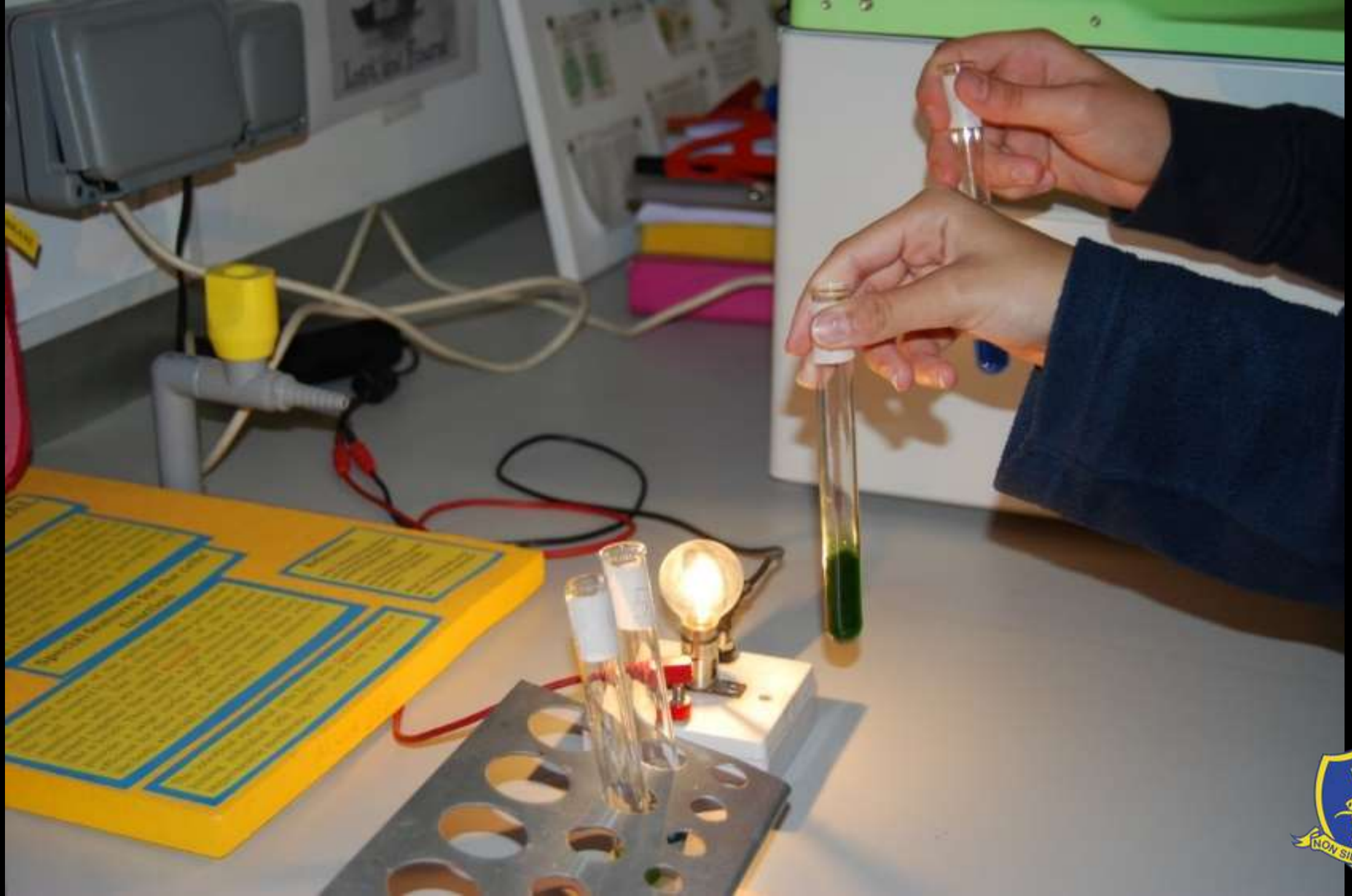


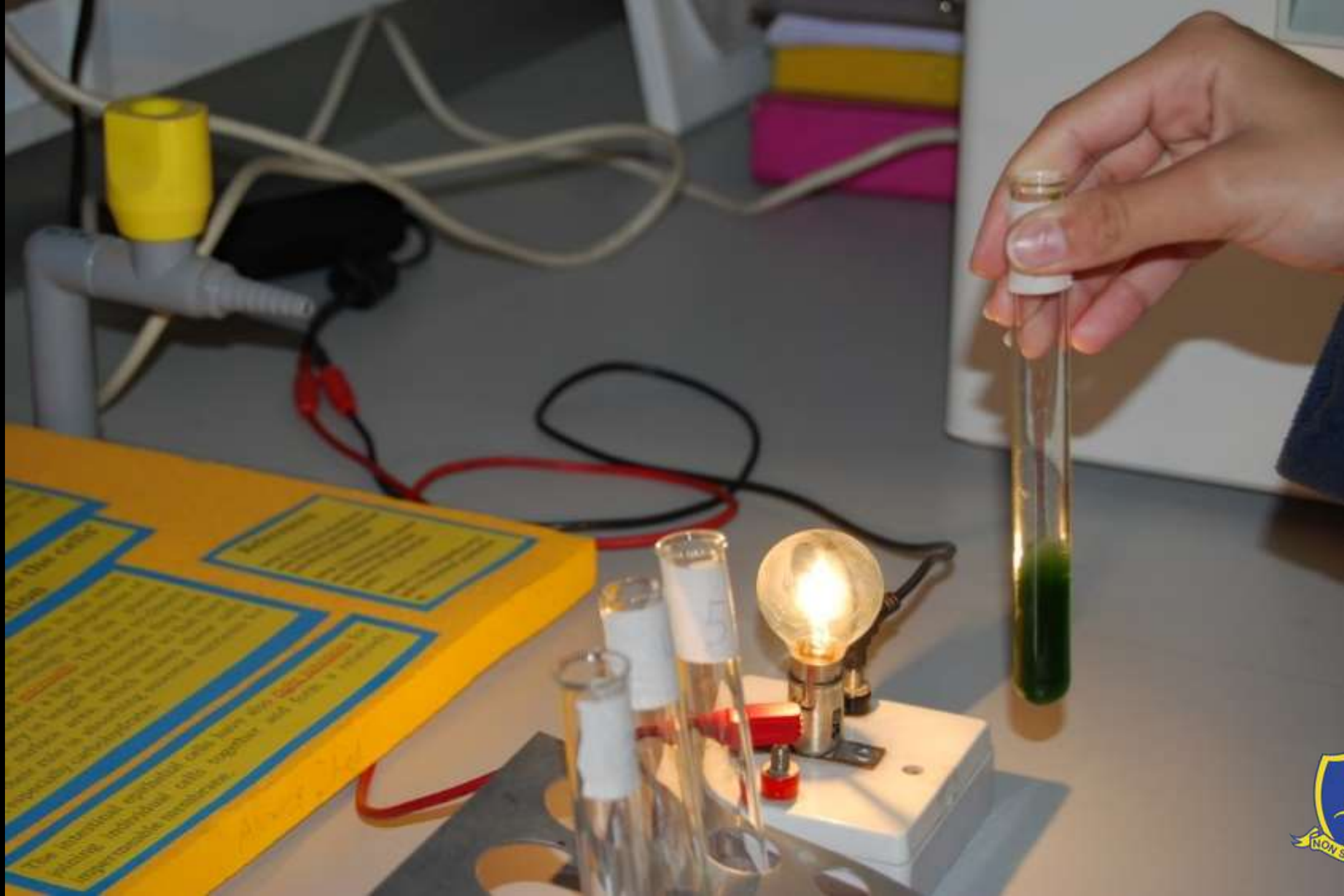














Root-Hair
Cell

MECREA



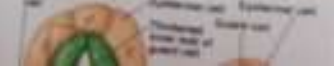
● Guard Cell ●

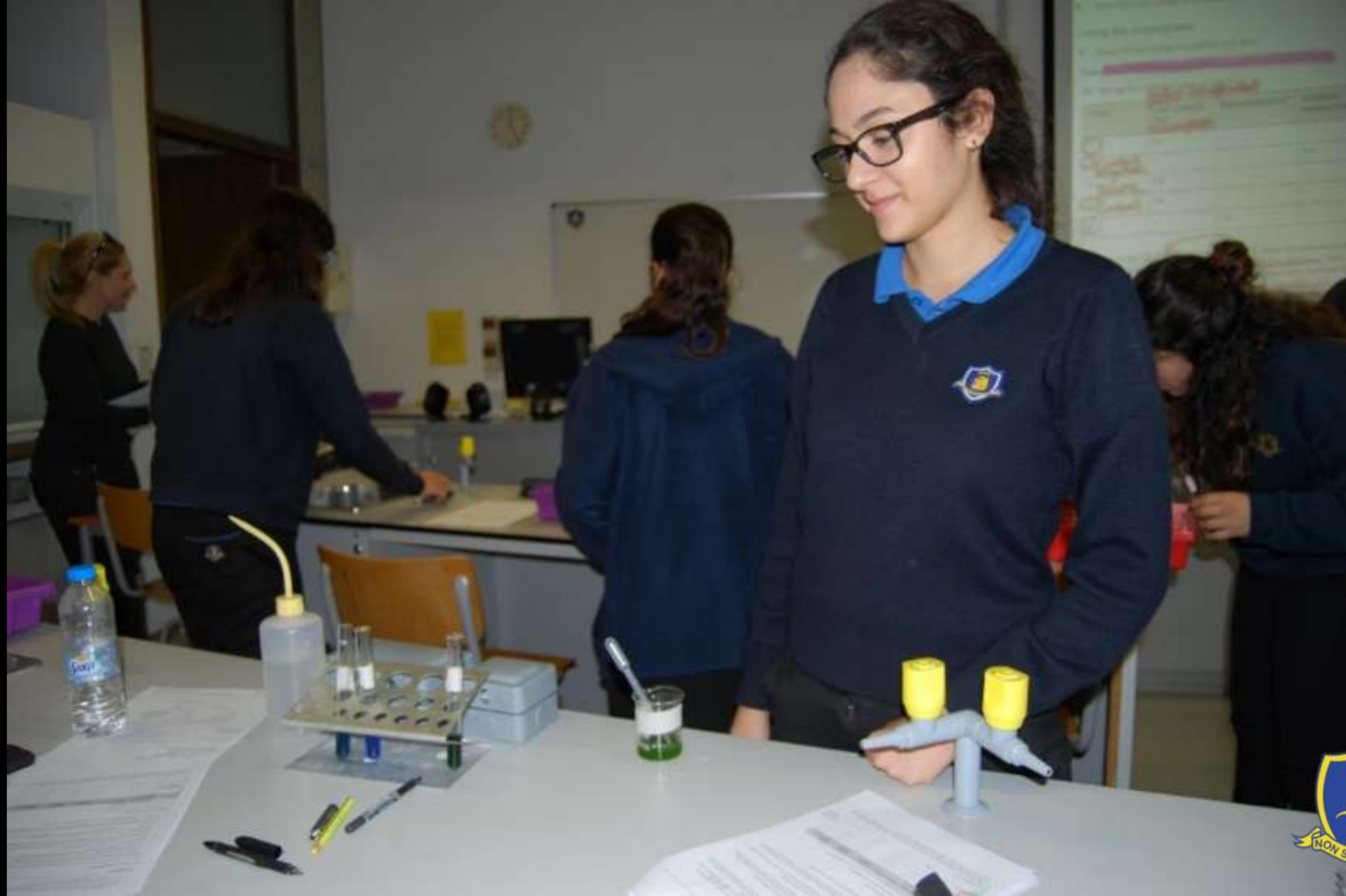


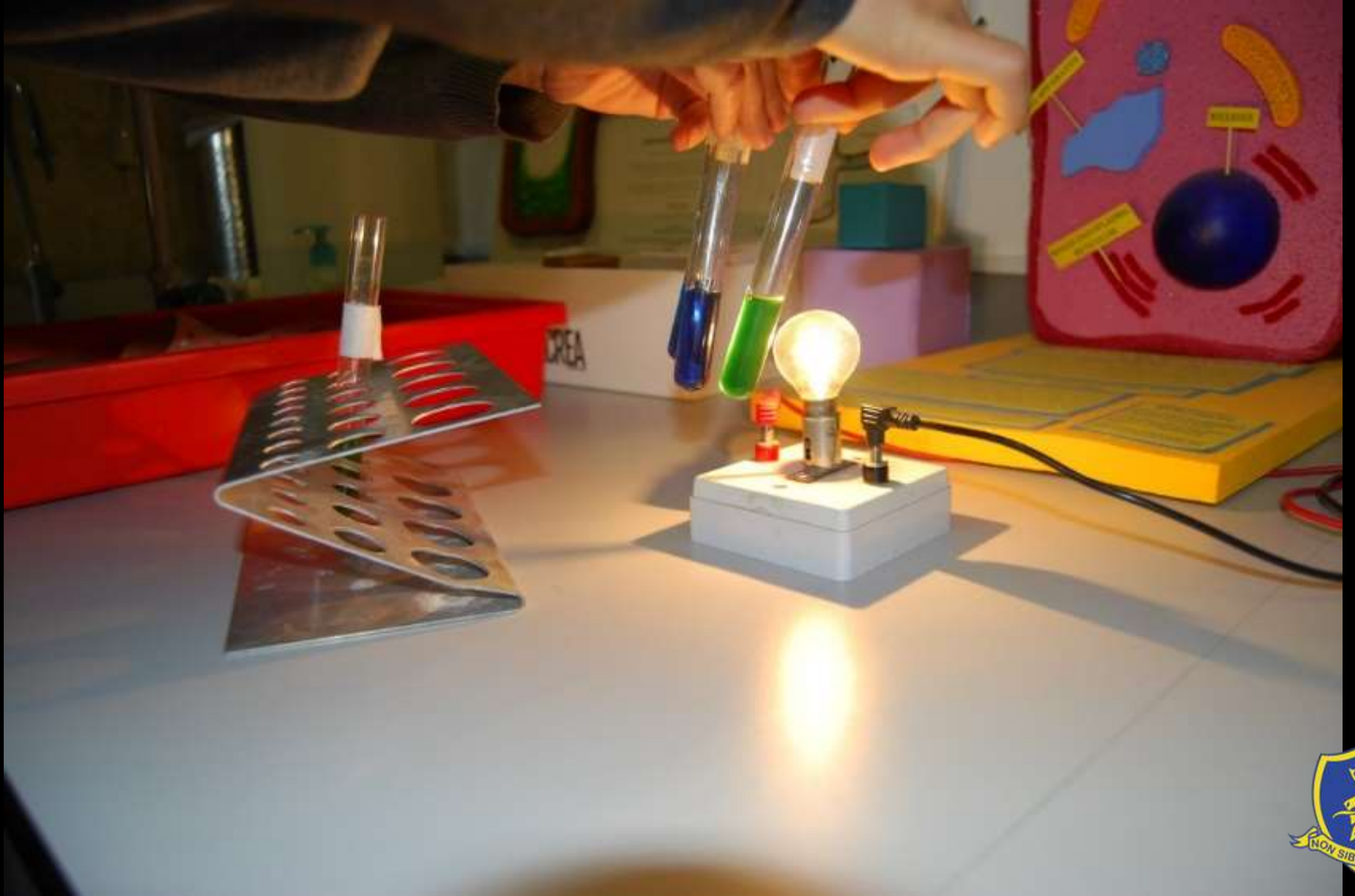
stoma opened

stoma closed

Stoma









Root-Hair
Cell











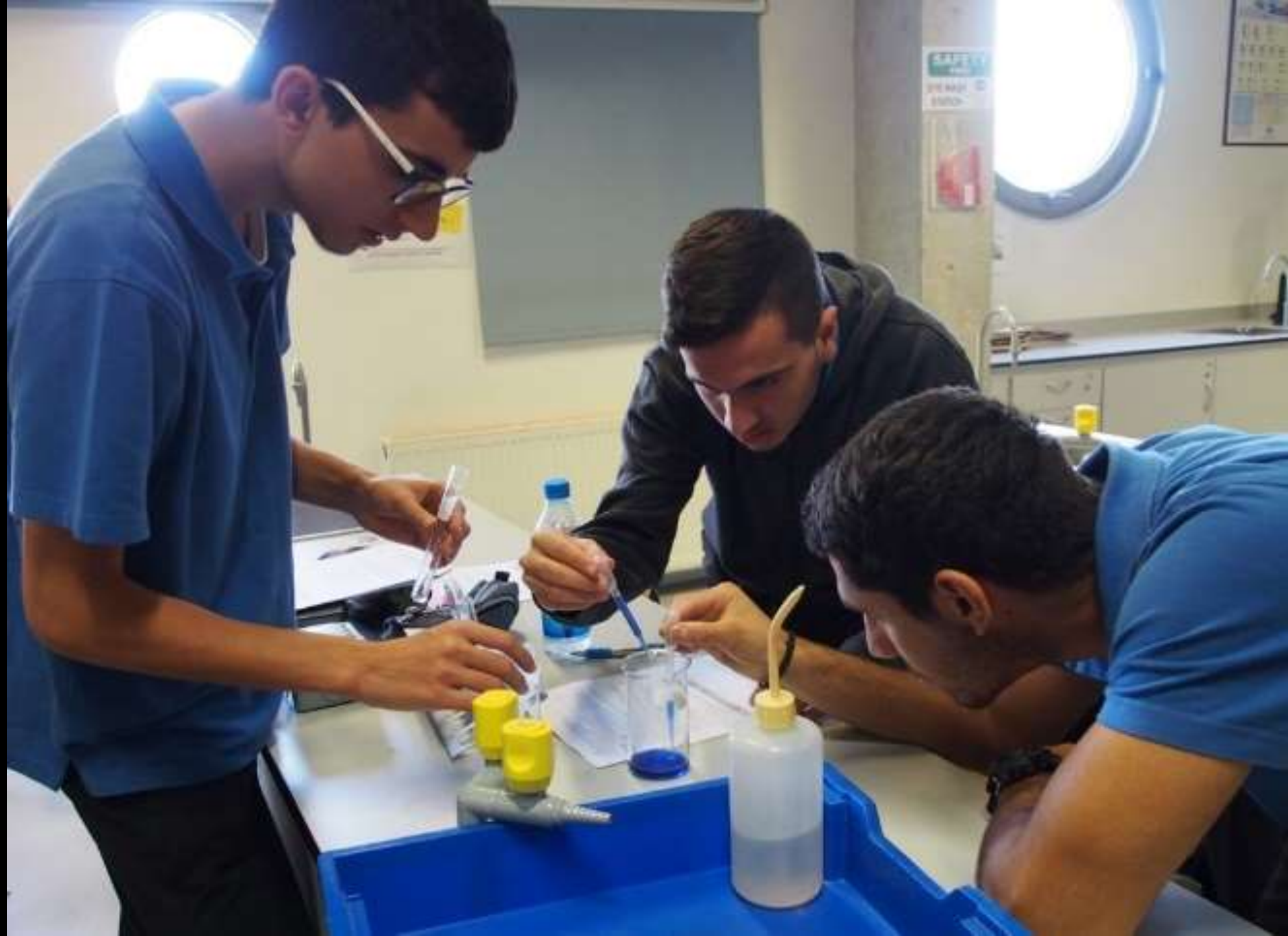








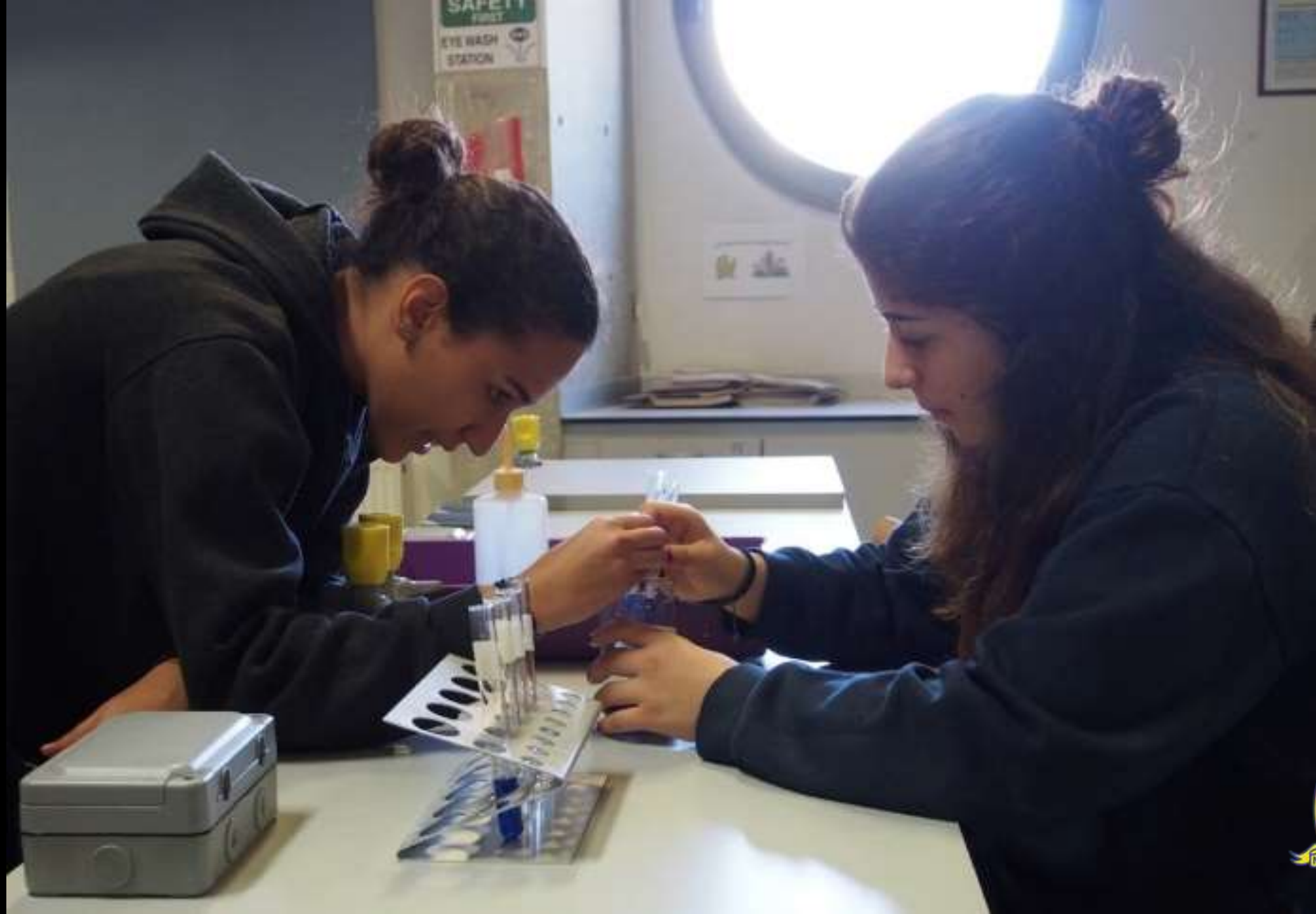


























COLLABORATE

*In the long history of humankind...those who learned to collaborate
and improvise most effectively have prevailed*

-Charles Darwin







Orange juice
from carton
Fresh
orange juice
2-day old
fresh orange
juice

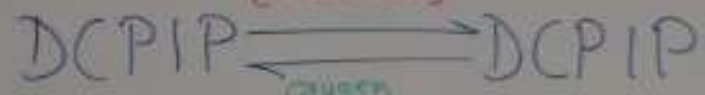
Assessed completeness - Orange juice, ground and 2.7% ascorbic acid by
ascorbic acid and ascorbic acid (ascorbic acid) results for ascorbic acid using
appropriate units and conversion (IP 10)

$$0.25\% = 2.5 \text{ mg/cm}^3$$

ascorbic acid = vit C
(reduction)

p 59

1%



oxidised form = blue

oxygen
(oxidation)

reduced form = colourless

$$10 \text{ mg/cm}^3$$

SAFETY
FIRST
EYE WASH
STATION















